

**Oracle FLEXCUBE Direct Banking**  
**Release 12.0.1.0.0**  
**Retail Loans User Manual**



**Part No. E52306-01**

## Table of Contents

1. Transaction Host Integration Matrix .....	3
2. Introduction .....	5
3. Loan Details .....	6
4. Loan Schedule .....	10
5. Loan Repayment Inquiry.....	15
6. Loan Settlement.....	21
7. Loan Account Activity.....	27
8. Loans Interest Rates .....	33
9. Loan Calculator.....	35
10. Mortgage Calculator.....	41

## 1. Transaction Host Integration Matrix

### Legends

<b>NH</b>	No Host Interface Required.
<b>★</b>	Host Interface to be developed separately.
<b>✓</b>	Pre integrated Host interface available.
<b>×</b>	Pre integrated Host interface not available.

Transaction Name	FLEXCUBE UBS	Third Party Host System
Loan Details	×	★
Loan Account Activity	×	★
Loan Schedule	×	★
Loan Settlement	×	★
Loan Repayment Inquiry	×	★
Loan Interest Rate	×	★
Loan Calculator	✓	★
Mortgage Rate Calculator	×	★
Financing Details	×	★
Financing Schedule	×	★

## Transaction Host Integration Matrix

<b>Transaction Name</b>	<b>FLEXCUBE UBS</b>	<b>Third Party Host System</b>
Financing Repayment Inquiry	×	★
Financing Settlement	×	★
Financing Account Activity	×	★
Financing Profit Rates Inquiry	×	★

## 2. Introduction

The loans module includes transactions which enable you to view loan details, loan transaction activity, repayments done, repayment schedule and the available loan interest rates for various loan products. The Loan module also includes transactions for calculation of Loan amount and calculation of mortgage amount that you can avail.

### 3. Loan Details

The **Loan Details** option allows you to view the details of loan accounts. Loan Repayment Inquiry, Loan Details, Loan account activity, Loan settlement all these transactions can be viewed through Loan details. You can view the details of individual loan account number by clicking the account number link.

#### Loan Account Details

Loan Account Details		23-08-2010 03:47:46 GMT -1000		
Account Description		Currency	Sanctioned Loan USD Amount Equivalent	
<b>010000263-SHANE GOULD</b>				
<a href="#">CHOJSHS073340003-CHO-BANK FUTURA - HEAD OFFICE</a>	-CHO-BANK FUTURA - HEAD OFFICE	USD	100,000.00	100,000.00
<a href="#">CHOJSHS073340003-CHO-BANK FUTURA - HEAD OFFICE</a>	-CHO-BANK FUTURA - HEAD OFFICE	USD	100,000.00	100,000.00
<a href="#">CHOJSHS073340003-CHO-BANK FUTURA - HEAD OFFICE</a>	-CHO-BANK FUTURA - HEAD OFFICE	USD	100,000.00	100,000.00
<a href="#">CHOJSHS073340003-CHO-BANK FUTURA - HEAD OFFICE</a>	-CHO-BANK FUTURA - HEAD OFFICE	USD	200,000.00	200,000.00
<a href="#">CHOJSHS073340003-CHO-BANK FUTURA - HEAD OFFICE</a>	-CHO-BANK FUTURA - HEAD OFFICE	USD	100,000.00	100,000.00
<a href="#">SBR AMORTIZED-CHO-BANK FUTURA - HEAD OFFICE</a>	SBR AMORTIZED-CHO-BANK FUTURA - HEAD OFFICE	USD	100,000.00	100,000.00
<a href="#">TO DSBR AMORTISED-CHO-BANK FUTURA - HEAD OFFICE</a>	TO DSBR AMORTISED-CHO-BANK FUTURA - HEAD OFFICE	USD	10,000.00	10,000.00
<a href="#">TO DSBR AMORTISED-CHO-BANK FUTURA - HEAD OFFICE</a>	TO DSBR AMORTISED-CHO-BANK FUTURA - HEAD OFFICE	USD	10,000.00	10,000.00
<a href="#">TO DSBR AMORTISED-CHO-BANK FUTURA - HEAD OFFICE</a>	TO DSBR AMORTISED-CHO-BANK FUTURA - HEAD OFFICE	USD	10,000.00	10,000.00
<a href="#">TO DSBR AMORTISED-CHO-BANK FUTURA - HEAD OFFICE</a>	TO DSBR AMORTISED-CHO-BANK FUTURA - HEAD OFFICE	USD	10,000.00	10,000.00
<a href="#">MEDIARY-CHO-BANK FUTURA - HEAD OFFICE</a>	MEDIARY-CHO-BANK FUTURA - HEAD OFFICE	USD	100,000.00	100,000.00
<a href="#">CHOMOH5073340007-MORTGAGE HOLIDAY PERIOD-CHO-BANK FUTURA - HEAD OFFICE</a>	CHOMOH5073340007-MORTGAGE HOLIDAY PERIOD-CHO-BANK FUTURA - HEAD OFFICE	GBP	80,000.00	117,310.40
<a href="#">CHOMOH5073340009-MORTGAGE HOLIDAY PERIOD-CHO-BANK FUTURA - HEAD OFFICE</a>	CHOMOH5073340009-MORTGAGE HOLIDAY PERIOD-CHO-BANK FUTURA - HEAD OFFICE	USD	100,000.00	100,000.00
<a href="#">CHOMOH6073340001-MORTGAGE HOLIDAY PERIOD MOVE FORWARD-CHO-BANK FUTURA - HEAD OFFICE</a>	CHOMOH6073340001-MORTGAGE HOLIDAY PERIOD MOVE FORWARD-CHO-BANK FUTURA - HEAD OFFICE	USD	70,000.00	70,000.00
<a href="#">COLCLP2073510007-Vehicle/Personal Loans-COL-BANK OF USA</a>	COLCLP2073510007-Vehicle/Personal Loans-COL-BANK OF USA	GBP	150,000.00	219,957.00
<a href="#">COLCLP2073510008-Vehicle/Personal Loans-COL-BANK OF USA</a>	COLCLP2073510008-Vehicle/Personal Loans-COL-BANK OF USA	GBP	150,000.00	219,957.00
<a href="#">COLCLP2073510009-Vehicle/Personal Loans-COL-BANK OF USA</a>	COLCLP2073510009-Vehicle/Personal Loans-COL-BANK OF USA	GBP	150,000.00	219,957.00
<a href="#">COLCLP2080170014-Vehicle/Personal Loans-COL-BANK OF USA</a>	COLCLP2080170014-Vehicle/Personal Loans-COL-BANK OF USA	GBP	150,000.00	219,957.00
<a href="#">MGRMLAA080250036-MORTGAGE LAON AUTO DSBR AMORTISED-MGR-MORGAGE GROUP AND NOTARY CONFIRMATI</a>	MGRMLAA080250036-MORTGAGE LAON AUTO DSBR AMORTISED-MGR-MORGAGE GROUP AND NOTARY CONFIRMATI	GBP	10,000.00	14,663.80
<a href="#">MGRMLAA080250039-MORTGAGE LAON AUTO DSBR AMORTISED-MGR-MORGAGE GROUP AND NOTARY CONFIRMATI</a>	MGRMLAA080250039-MORTGAGE LAON AUTO DSBR AMORTISED-MGR-MORGAGE GROUP AND NOTARY CONFIRMATI	USD	10,000.00	10,000.00
<a href="#">MGRMLAA080250040-MORTGAGE LAON AUTO DSBR AMORTISED-MGR-MORGAGE GROUP AND NOTARY CONFIRMATI</a>	MGRMLAA080250040-MORTGAGE LAON AUTO DSBR AMORTISED-MGR-MORGAGE GROUP AND NOTARY CONFIRMATI	USD	10,000.00	10,000.00
<b>Total for Loan Account (USD Equivalent)</b>			<b>2,041,802.20</b>	<b>2,041,802.20</b>
<b>Grand Total for All Loan Accounts (USD Equivalent)</b>			<b>2,041,802.20</b>	<b>2,041,802.20</b>

**Field description**

Field Name	Description
<b>Account Number</b>	[Display] This column displays the Account Number for the Loan accounts.
<b>Currency</b>	[Display] This column displays the base currency of the loan account.
<b>Sanctioned Loan Amount</b>	[Display] This field displays the sanctioned loan amount.
<b>Base Currency Equivalent</b>	[Display] This field displays the sanctioned loan amount in Base Currency.

1. Click the **Account details** link on the pop up to view the individual loan account details. The system displays the **Loan Account Details** screen.  
OR  
Navigate through the menus **Loans > Conventional Loans > Loan Details**, to view Loan Details.

**Loan Account Details**

31-03-2011 13:00:00 GMT +0530

---

Account Details	
Customer Id: QT2001774	Loan Tenure: 12 Months 0 Days
Account Number: QT1LCL1102770002	Product Name: Home Loans -With Pre-EMI
Currency: GBP	

Loan Details	
Opening Date: 04-10-2010	Maturity Date: 04-10-2011
Sanctioned Loan Amount: 120,000.00	Disbursed Loan Amount: 120,000.00
Interest Rate: 10.00 %	Principal Penalty Rate: 0.00 %
Amount Paid Till Date: 0.00	Prepayment Penalty Interest Rate: 0.00%
Installment Paid: 0	
Principal Repayment Frequency: Daily	Interest Repayment Frequency: Monthly

Outstanding Loan Details	
Principal Balance: 109,090.90	Prepayment Penalty Amount: 0.00
Penalties: 0.00	Fees And Charges: 0.00
Next Installment Date: 04-10-2011	Next Installment Amount: 0.00
Installment Arrears: 111,499.87	Loan Outstanding: 110,011.45
Remaining Installments: 10	
Final Settlement Amount: 110,011.45	Interest Amount Still to be paid: 920.55

Back
Loan Activity

**Field Description**

Field Name	Description
<b>Account Details</b>	

<b>Field Name</b>	<b>Description</b>
<b>Customer Id</b>	[Display] This field displays the customer ID's mapped.
<b>Loan Tenure</b>	[Display] This field displays the total tenure of the Loan.
<b>Account Number</b>	[Display] This field displays the Loan account numbers under the customer ID.
<b>Product Name</b>	[Display] This field displays the loan product name.
<b>Currency</b>	[Display] This field displays the base currency of the loan account.
<b>Loan Details</b>	
<b>Opening Date</b>	[Display] This field displays the opening date of the loan account.
<b>Maturity Date</b>	[Display] This field displays the maturity date of the loan account.
<b>Sanctioned Loan Amount</b>	[Display] This field displays the sanctioned loan amount.
<b>Disbursed Loan Amount</b>	[Display] This field displays the loan amount disbursed till date.
<b>Interest Rate</b>	[Display] This field displays the interest rate applicable to the loan account.
<b>Principal Penalty Rate</b>	[Display] This field displays the rate of penalty on the principal amount.
<b>Amount paid till date</b>	[Display] This field displays the total amount paid out of the total Loan amount till date.
<b>Prepayment penalty interest rate</b>	[Display] This field displays the penalty interest rate on the prepayment of the loan amount.
<b>Installment Paid</b>	[Display] This field displays the total number of installments paid till date..



Field Name	Description
<b>Principal Repayment Frequency</b>	[Display] This field displays the payment frequency of the principal.
<b>Interest Repayment Frequency</b>	[Display] This field displays the payment frequency of the interest.
<b>Outstanding Loan Details</b>	
<b>Principal Balance</b>	[Display] This field displays the outstanding Principle balance on the loan account as on date.
<b>Prepayment penalty amount</b>	[Display] This field displays the prepayment penalty amount on the loan amount.
<b>Penalties</b>	[Display] This field displays the number of penalties charged on the loan.
<b>Fees And Charges</b>	[Display] This field displays the fees and service charges applied on the loan account.
<b>Next Installment Date</b>	[Display] This field displays the due date of the next installment.
<b>Next Installment Amount</b>	[Display] This field displays the next installment amount.
<b>Installment Arrears</b>	[Display] This field displays the unpaid installment amount.
<b>Loan Outstanding</b>	[Display] This field displays the cumulated principal outstanding, penalty interest, fees/service charges and installment amount.
<b>Remaining installments</b>	[Display] This field displays the total number of remaining installments.
<b>Final Settlement Amount</b>	[Display] This field displays the final settlement amount.
<b>Interest amount still to be paid.</b>	[Display] This field displays the total interest applicable to the loan account.

2. Click the **Back** button. The system displays the initial **Loan Account Details** screen.

## 4. Loan Schedule

Customers may have loan accounts pertaining to different products, amounts and variants. This option allows you to view individual loan parameters.

This is similar to the amortization schedule prepared for every loan. Every equated monthly installment consists of majorly two components:

- Principal
- Interest

The schedule shows how every installment is part interest and part principal..

### [Loan Account Details](#)

Loan Account Details		23-08-2010 03:47:46 GMT -1000	
Account Description	Currency	Sanctioned Loan USD Amount Equivalent	
<b>010000263-SHANE GOULD</b>			
CHOJSHS073340003-CHO-BANK FUTURA - HEAD OFFICE	USD	100,000.00	100,000.00
CHO-BANK FUTURA - HEAD OFFICE	USD	100,000.00	100,000.00
Loan Details	USD	100,000.00	100,000.00
Loan Account Activity	USD	200,000.00	200,000.00
Loan Repayment Inquiry	USD	100,000.00	100,000.00
Loan Settlement	USD	10,000.00	10,000.00
Loan Schedule	USD	10,000.00	10,000.00
Adhoc Statement For Loans	USD	100,000.00	100,000.00
CHOMOH5073340007-MORTGAGE HOLIDAY PERIOD-CHO-BANK FUTURA - HEAD OFFICE	GBP	80,000.00	117,310.40
CHOMOH5073340009-MORTGAGE HOLIDAY PERIOD-CHO-BANK FUTURA - HEAD OFFICE	USD	100,000.00	100,000.00
CHOMOH6073340001-MORTGAGE HOLIDAY PERIOD MOVE FORWARD-CHO-BANK FUTURA - HEAD OFFICE	USD	70,000.00	70,000.00
COLCLP2073510007-Vehicle/Personal Loans-COL-BANK OF USA	GBP	150,000.00	219,957.00
COLCLP2073510008-Vehicle/Personal Loans-COL-BANK OF USA	GBP	150,000.00	219,957.00
COLCLP2073510009-Vehicle/Personal Loans-COL-BANK OF USA	GBP	150,000.00	219,957.00
COLCLP2080170014-Vehicle/Personal Loans-COL-BANK OF USA	GBP	150,000.00	219,957.00
MGRMLAA080250036-MORTGAGE LAON AUTO DSBR AMORTISED-MGR-MORGAGE GROUP AND NOTARY CONFIRMATI	GBP	10,000.00	14,663.80
MGRMLAA080250039-MORTGAGE LAON AUTO DSBR AMORTISED-MGR-MORGAGE GROUP AND NOTARY CONFIRMATI	USD	10,000.00	10,000.00
MGRMLAA080250040-MORTGAGE LAON AUTO DSBR AMORTISED-MGR-MORGAGE GROUP AND NOTARY CONFIRMATI	USD	10,000.00	10,000.00
<b>Total for Loan Account (USD Equivalent)</b>		<b>2,041,802.20</b>	<b>2,041,802.20</b>
<b>Grand Total for All Loan Accounts (USD Equivalent)</b>		<b>2,041,802.20</b>	<b>2,041,802.20</b>

1. Click the **Loan Schedule** hyperlink on the pop up. The system displays the **Loan Schedule** screen.  
OR  
Navigate through the menus **Loans > Conventional Loans > Loan Schedule**, to view Loan Schedule.

Loan Schedule

Loan Schedule		31-03-2011 13:00:00 GMT +0530	
Account Description	Currency	Sanctioned Loan GBP Amount Equivalent	
<b>QT2001774-Oxy Trading Inc Changed</b>			
QT1LCL1102770002- Home Loans -With Pre-EMI-QT1-QT1-LONDON	GBP	120,000.00	120,000.00
QT1LCL1102830003- Home Loans -With Pre-EMI-QT1-QT1-LONDON	USD	65,000.00	107,699.70
QT1LCL1102830004- Home Loans -With Pre-EMI-QT1-QT1-LONDON	USD	65,000.00	107,699.70
QT1LCL1102830006- Home Loans -With Pre-EMI-QT1-QT1-LONDON	GBP	50,000.00	50,000.00
QT1LCL1102830012- Home Loans -With Pre-EMI-QT1-QT1-LONDON	USD	120,000.00	198,830.22
QT1LCL1102830013- Home Loans -With Pre-EMI-QT1-QT1-LONDON	USD	56,000.00	92,787.43
QT1LCL1102830014- Home Loans -With Pre-EMI-QT1-QT1-LONDON	USD	65,000.00	107,699.70
QT1LCL1102830016- Home Loans -With Pre-EMI-QT1-QT1-LONDON	USD	65,000.00	107,699.70
QT1LCL1102830017- Home Loans -With Pre-EMI-QT1-QT1-LONDON	USD	65,000.00	107,699.70
QT1LCL1102830019- Home Loans -With Pre-EMI-QT1-QT1-LONDON	GBP	50,000.00	50,000.00
QT1LCL1102830020- Home Loans -With Pre-EMI-QT1-QT1-LONDON	GBP	50,000.00	50,000.00
QT1LCL1103040001- Home Loans -With Pre-EMI-QT1-QT1-LONDON	USD	65,000.00	107,699.70
QT1LCL1103040002- Home Loans -With Pre-EMI-QT1-QT1-LONDON	USD	65,000.00	107,699.70
QT1LCL1103040003- Home Loans -With Pre-EMI-QT1-QT1-LONDON	USD	65,000.00	107,699.70
QT1LCL1103040016- Home Loans -With Pre-EMI-QT1-QT1-LONDON	USD	65,000.00	107,699.70
QT1LCL1103040024- Home Loans -With Pre-EMI-QT1-QT1-LONDON	USD	65,000.00	107,699.70
QT1LCL1103040026- Home Loans -With Pre-EMI-QT1-QT1-LONDON	GBP	50,000.00	50,000.00
QT1LCL1110310010- Home Loans -With Pre-EMI-QT1-QT1-LONDON	GBP	5,000.00	5,000.00
QT1LCL1110310011- Home Loans -With Pre-EMI-QT1-QT1-LONDON	GBP	5,000.00	5,000.00
QT1LCL1110310013- Home Loans -With Pre-EMI-QT1-QT1-LONDON	GBP	5,000.00	5,000.00
QT2LDS1110600002- Discounted Loans-QT2-QT2-USA	AED	50,000.00	2,490.04
QT2LDS1110600003- Discounted Loans-QT2-QT2-USA	AED	50,000.00	2,490.04
QT2LRE4110600002- Vehicle/Personal Loans-QT2-QT2-USA	GBP	25,000.00	25,000.00
<b>Total for Loan Account (GBP Equivalent)</b>		<b>2,308,491.49</b>	<b>2,308,491.49</b>
<b>Grand Total for All Loan Accounts (GBP Equivalent)</b>		<b>2,308,491.49</b>	<b>2,308,491.49</b>

Field Description

Column Name	Description
<b>Account Number</b>	[Display] This column displays the account number of the loan.
<b>Currency</b>	[Display] This column displays the currency of the Loan.
<b>Sanctioned Loan Amount</b>	[Display] This column displays the total sanctioned Loan amount.
<b>Base Currency Equivalent</b>	[Display] This column displays the total sanctioned Loan amount in Base Equivalent currency.

- To view the schedule of a particular account, click on the appropriate link under the **Account Number** column. The system displays the schedule details of the loan in the **Loan Schedule** screen.

**Loan Schedule**

Loan Schedule		31-03-2011 13:00:00 GMT +0530					
<b>Account Details</b>							
Customer Id: QT2001774				Loan Tenure: 3 Month			
Account Number: QT1LCL1102830014				Product Name: Home Loans -With Pre-EMI			
Installment Paid: 0				Remaining Installments: 4			
Currency: USD				Sanctioned Loan Amount: 65,000.00			
<b>Loan Schedule Details</b>							
Installment No	Due Date	Principal	Interest Amount	Charge Amount	Installment Amount	Unpaid Installment Amount	Status
1	31-10-2010	0.00	0.00	47.87	47.87	0.00	Paid
2	04-11-2010	21,461.13	485.86	0.00	21,946.99	21,535.62	Unpaid
3	04-12-2010	21,674.75	558.68	0.00	22,233.43	22,233.43	Unpaid
4	04-01-2011	21,864.12	577.31	0.00	22,441.43	22,441.43	Unpaid
5	28-01-2011	61,793.72	446.95	0.00	62,240.67	62,240.67	Unpaid
6	31-03-2011	0.00	0.00	2,247.44	2,247.44	2,247.44	Unpaid

[Back](#)

**Field Description**

Field Name	Description
<b>Account details</b>	
<b>Customer Id</b>	[Display] This field displays the Customer id of the.
<b>Loan tenure</b>	[Display] This field displays the total tenure of the Loan.

<b>Field Name</b>	<b>Description</b>
<b>Account Number</b>	[Display] This field displays the Account number of the Loan account.
<b>Product Name</b>	[Display] This field displays the name of the product of the Loan.
<b>Installment Paid</b>	[Display] This field displays the number of installments paid.
<b>Remaining installments</b>	[Display] This field displays the total number of remaining installments.
<b>Currency</b>	[Display] This field displays the currency of the Loan account.
<b>Sanctioned Loan amount</b>	[Display] This field displays the total sanctioned loan amount.
<b>Column Name</b>	<b>Description</b>
<b>Installment No.</b>	[Display] This column displays the serial number of the installment. The schedule lists all the installments in serial order.
<b>Due Date</b>	[Display] This column displays the date on which the installment becomes payable. If paid after this date, it might attract a penalty.
<b>Principal</b>	[Display] This column displays the Principal amount due on the due date.
<b>Interest Amount</b>	[Display] This column displays the interest component of the installment amount.
<b>Charge Amount</b>	[Display] This column displays any penalty or additional charges levied on the loan account.
<b>Installment Amount</b>	[Display] This column displays the total installment amount payable.
<b>Unpaid installment amount</b>	[Display] This column displays the total unpaid installment amount from the total loan amount.
<b>Status</b>	[Display] This column displays the status of the loan.

3. Click the **Back** button to navigate to the **Loan schedule** main screen.

## 5. Loan Repayment Inquiry

Using this option allows you to inquire and view the loan repayment details along with the outstanding balance. The Loan Repayment inquiry can be done directly from the Loan details screen.

### To inquire loan Repayment Inquiry details.

1. Navigate through the menus to **Loans > Loan Details**. The system displays the **Loan Account Details** screen.

Loan Account Details

Loan Account Details		23-08-2010 03:47:46 GMT -1000	
Account Description	Currency	Sanctioned Loan USD Amount Equivalent	
<b>010000263-SHANE GOULD</b>			
CHOJSHS073340003-CHO-BANK FUTURA - HEAD OFFICE	USD	100,000.00	100,000.00
CHOJSHS073340003-CHO-BANK FUTURA - HEAD OFFICE	USD	100,000.00	100,000.00
CHOJSHS073340003-CHO-BANK FUTURA - HEAD OFFICE	USD	100,000.00	100,000.00
CHOJSHS073340003-CHO-BANK FUTURA - HEAD OFFICE	USD	200,000.00	200,000.00
CHOJSHS073340003-CHO-BANK FUTURA - HEAD OFFICE	USD	100,000.00	100,000.00
SBR AMORTIZED-CHO-BANK FUTURA - HEAD OFFICE	USD	100,000.00	100,000.00
DSBR AMORTISED-CHO-BANK FUTURA - HEAD OFFICE	USD	10,000.00	10,000.00
DSBR AMORTISED-CHO-BANK FUTURA - HEAD OFFICE	USD	10,000.00	10,000.00
DSBR AMORTISED-CHO-BANK FUTURA - HEAD OFFICE	USD	10,000.00	10,000.00
DSBR AMORTISED-CHO-BANK FUTURA - HEAD OFFICE	USD	10,000.00	10,000.00
MEDIARY-CHO-BANK FUTURA - HEAD OFFICE	USD	100,000.00	100,000.00
CHOMOH5073340007-MORTGAGE HOLIDAY PERIOD-CHO-BANK FUTURA - HEAD OFFICE	GBP	80,000.00	117,310.40
CHOMOH5073340009-MORTGAGE HOLIDAY PERIOD-CHO-BANK FUTURA - HEAD OFFICE	USD	100,000.00	100,000.00
CHOMOH6073340001-MORTGAGE HOLIDAY PERIOD MOVE FORWARD-CHO-BANK FUTURA - HEAD OFFICE	USD	70,000.00	70,000.00
COLCLP2073510007-Vehicle/Personal Loans-COL-BANK OF USA	GBP	150,000.00	219,957.00
COLCLP2073510008-Vehicle/Personal Loans-COL-BANK OF USA	GBP	150,000.00	219,957.00
COLCLP2073510009-Vehicle/Personal Loans-COL-BANK OF USA	GBP	150,000.00	219,957.00
COLCLP2080170014-Vehicle/Personal Loans-COL-BANK OF USA	GBP	150,000.00	219,957.00
MGRMLAA080250036-MORTGAGE LAON AUTO DSBR AMORTISED-MGR-MORGAGE GROUP AND NOTARY CONFIRMATI	GBP	10,000.00	14,663.80
MGRMLAA080250039-MORTGAGE LAON AUTO DSBR AMORTISED-MGR-MORGAGE GROUP AND NOTARY CONFIRMATI	USD	10,000.00	10,000.00
MGRMLAA080250040-MORTGAGE LAON AUTO DSBR AMORTISED-MGR-MORGAGE GROUP AND NOTARY CONFIRMATI	USD	10,000.00	10,000.00
<b>Total for Loan Account (USD Equivalent)</b>		<b>2,041,802.20</b>	<b>2,041,802.20</b>
<b>Grand Total for All Loan Accounts (USD Equivalent)</b>		<b>2,041,802.20</b>	<b>2,041,802.20</b>

2. Click the **Loan Repayment Inquiry** hyperlink on the pop up of a particular loan account. The system displays the **Loan Repayment Inquiry** screen with details.

OR

3. Navigate through the menus **Loans > Conventional Loans > Loan Repayment Inquiry**, to access Loan Rpayment Inquiry.

Loan Repayment Inquiry

Loan Repayment Inquiry		31-03-2011 13:00:00 GMT +0530	
Loan Account:*	<input type="text" value="Select"/>		
Repaid Amount:	<input type="text"/>		
Repayment From Date:	<input type="text"/>	Repayment To Date:	<input type="text"/>
			<input type="button" value="Submit"/>

Field Description

Field Name	Description
<b>Loan Account</b>	[Mandatory, Drop-Down] Select the loan account for which the Repayment inquiry is to be done from the drop-down list.



Field Name	Description
<b>Repaid Amount</b>	[Optional, Numeric, 10] Type the repaid amount for search criterion.
<b>Repayment From Date</b>	[Conditional, Pick List] Select the start date of the period for the search criterion.
<b>Repayment To Date</b>	[Conditional, Pick List] Select the end date of the period for the search criterion.

4. Enter the search criteria.
5. Click the **Submit** button. The system displays the the **Loan Repayment Inquiry** screen with the details.

### Loan Repayment Inquiry

31-03-2011 13:00:00 GMT +0530

---

Loan Account:\*

Repaid Amount:

Repayment From Date:

Repayment To Date:

Account Number	Status	Initiated Date	Repaid Amount
<a href="#">QT1LCL1102830020</a>	Active	10-10-2010	165.69
<a href="#">QT1LCL1102830020</a>	Active	10-10-2010	5.00
<a href="#">QT1LCL1102830020</a>	Active	10-10-2010	20.00
<a href="#">QT1LCL1102830020</a>	Active	10-10-2010	20.00
<a href="#">QT1LCL1102830020</a>	Active	10-10-2010	25.00
<a href="#">QT1LCL1102830020</a>	Active	10-10-2010	35.00
<a href="#">QT1LCL1102830020</a>	Active	31-10-2010	12.00
<a href="#">QT1LCL1102830020</a>	Active	31-10-2010	5.00
<a href="#">QT1LCL1102830020</a>	Active	31-10-2010	12.00

### Field Description

Column Name	Description
<b>Account Number</b>	[Display] This column displays the selected loan account numbers.
<b>Status</b>	[Display] This column displays the loan account status.
<b>Initiated Date</b>	[Display] This column displays the loan repayment initiation date.

Column Name	Description
<b>Repaid Amount</b>	[Display] This column displays the repaid loan amount.

- Click the **Account Number** hyperlink to view the individual loan account repayment details. The system displays the **Loan Repayment** Inquiry screen with the details.

**Loan Repayment Inquiry**

31-03-2011 13:00:00 GMT +0530

---

**Loan Repayment Inquiry**

Loan Details	
Account Number: QT1LCL1102830020	Product: Home Loans -With Pre-EMI
Loan Tenure: 4 Months 22 Days	
Account Currency: GBP	Branch: QT1
Sanctioned Loan Amount: 50,000.00	Disbursed Loan Amount: 48,000.00
Value Date: 04-10-2010	Maturity Date: 28-02-2011

Repayment Details	
User Reference Number: QT1ZSTL10283002H	Debit Branch: QT1
Debit Account: QT100177402	Debit Amount: 165.69
Debit Currency: GBP	Installment Paid: 0

Repayment Break Up	
Component Name	Amount
MAIN_INT	0.00
PRINCIPAL	165.69

Outstanding Balance		
Component Name	Amount	Currency
ODPR_PNLTY	1,259.36	GBP
ODIN_PNLTY	24.81	GBP
MAIN_INT	0.00	GBP
PRINCIPAL	95,729.31	GBP
Total Outstanding Balance	97,013.48	GBP
Remaining Installments:	4	

[Back](#)

**Field Description**

Field Name	Description
<b>Loan Details</b>	
<b>Account Number</b>	[Display] This field displays the loan account number.
<b>Product</b>	[Display] This field displays the loan product name.
<b>Loan Tenure</b>	[Display] This field displays the total loan tenure of the Loan..

<b>Account Currency</b>	[Display] This field displays the base currency of the loan account.
<b>Branch</b>	[Display] This field displays the branch of the loan account.
<b>Sanctioned Loan Amount</b>	[Display] This field displays the sanctioned loan amount for the loan account.
<b>Disbursed Loan Amount</b>	[Display] This field displays the disbursed loan amount for the loan account.
<b>Value Date</b>	[Display] This field displays the value date of the loan account.
<b>Maturity Date</b>	[Display] This field displays the maturity date of the loan account.
<b>Repayment Details</b>	
<b>User Reference Number</b>	[Display] This field displays the user reference number associated with the loan account.
<b>Debit Branch</b>	[Display] This field displays the debit branch name.
<b>Debit Account</b>	[Display] This field displays the debit account number.
<b>Debit Amount</b>	[Display] This field displays the loan amount debited.
<b>Debit Currency</b>	[Display] This field displays the currency in which the loan amount is debited.
<b>Installment Paid</b>	[Display] This field displays the total number of installments paid.
<b>Repayment Break Up</b>	
<b>Component Name</b>	[Display] This column displays the various components under which the loan repayment amount is divided.

**Amount** [Display]  
This column displays the component-level breakup of the loan repayment amount.

**Outstanding Balance**

**Component Name** [Display]  
This column displays the various components under which the loan amount is outstanding.

**Amount** [Display]  
This column displays the component-level breakup of the outstanding loan amount.

**Currency** [Display]  
This column displays the currency of the outstanding loan amount.

6. Click the **OK** button. The system displays the initial **Loan Repayment Inquiry** screen.

## 6. Loan Settlement

This option allows you to pay off outstanding balance in your loan account. You can transfer funds from another account to pay off the balance amount.

You can settle the loan by repaying the amount from the account and thus the settlement will be done. This settlement could be the settlement of complete amount or the partial amount as per the amount of repayment done.

### To view loan details.

1. Navigate through the menus to **Loan Details**. The system displays the **Loan Account Details** screen.

### Loan Account Details

Loan Account Details		23-08-2010 03:47:46 GMT -1000		
Account Description		Currency	Sanctioned Loan Amount	USD Equivalent
010000263-SHANE GOULD				
CHOJSHS073340003-CHO-BANK FUTURA - HEAD OFFICE	-CHO-BANK FUTURA - HEAD OFFICE	USD	100,000.00	100,000.00
CHOJSHS073340003-CHO-BANK FUTURA - HEAD OFFICE	-CHO-BANK FUTURA - HEAD OFFICE	USD	100,000.00	100,000.00
CHOJSHS073340003-CHO-BANK FUTURA - HEAD OFFICE	-CHO-BANK FUTURA - HEAD OFFICE	USD	100,000.00	100,000.00
CHOJSHS073340003-CHO-BANK FUTURA - HEAD OFFICE	-CHO-BANK FUTURA - HEAD OFFICE	USD	200,000.00	200,000.00
CHOJSHS073340003-CHO-BANK FUTURA - HEAD OFFICE	-CHO-BANK FUTURA - HEAD OFFICE	USD	100,000.00	100,000.00
CHOJSHS073340003-CHO-BANK FUTURA - HEAD OFFICE	SBR AMORTIZED-CHO-BANK FUTURA - HEAD OFFICE	USD	100,000.00	100,000.00
CHOJSHS073340003-CHO-BANK FUTURA - HEAD OFFICE	DSBR AMORTISED-CHO-BANK FUTURA - HEAD OFFICE	USD	10,000.00	10,000.00
CHOJSHS073340003-CHO-BANK FUTURA - HEAD OFFICE	DSBR AMORTISED-CHO-BANK FUTURA - HEAD OFFICE	USD	10,000.00	10,000.00
CHOJSHS073340003-CHO-BANK FUTURA - HEAD OFFICE	DSBR AMORTISED-CHO-BANK FUTURA - HEAD OFFICE	USD	10,000.00	10,000.00
CHOJSHS073340003-CHO-BANK FUTURA - HEAD OFFICE	DSBR AMORTISED-CHO-BANK FUTURA - HEAD OFFICE	USD	10,000.00	10,000.00
CHOJSHS073340003-CHO-BANK FUTURA - HEAD OFFICE	MEDIARY-CHO-BANK FUTURA - HEAD OFFICE	USD	100,000.00	100,000.00
CHOMOH5073340007-MORTGAGE HOLIDAY PERIOD-CHO-BANK FUTURA - HEAD OFFICE		GBP	80,000.00	117,310.40
CHOMOH5073340009-MORTGAGE HOLIDAY PERIOD-CHO-BANK FUTURA - HEAD OFFICE		USD	100,000.00	100,000.00
CHOMOH6073340001-MORTGAGE HOLIDAY PERIOD MOVE FORWARD-CHO-BANK FUTURA - HEAD OFFICE		USD	70,000.00	70,000.00
COLCLP2073510007-Vehicle/Personal Loans-COL-BANK OF USA		GBP	150,000.00	219,957.00
COLCLP2073510008-Vehicle/Personal Loans-COL-BANK OF USA		GBP	150,000.00	219,957.00
COLCLP2073510009-Vehicle/Personal Loans-COL-BANK OF USA		GBP	150,000.00	219,957.00
COLCLP2080170014-Vehicle/Personal Loans-COL-BANK OF USA		GBP	150,000.00	219,957.00
MGRMLAA080250036-MORTGAGE LAON AUTO DSBR AMORTISED-MGR-MORGAGE GROUP AND NOTARY CONFIRMATI		GBP	10,000.00	14,663.80
MGRMLAA080250039-MORTGAGE LAON AUTO DSBR AMORTISED-MGR-MORGAGE GROUP AND NOTARY CONFIRMATI		USD	10,000.00	10,000.00
MGRMLAA080250040-MORTGAGE LAON AUTO DSBR AMORTISED-MGR-MORGAGE GROUP AND NOTARY CONFIRMATI		USD	10,000.00	10,000.00
<b>Total for Loan Account (USD Equivalent)</b>			<b>2,041,802.20</b>	<b>2,041,802.20</b>
<b>Grand Total for All Loan Accounts (USD Equivalent)</b>			<b>2,041,802.20</b>	<b>2,041,802.20</b>

2. Click the **Loan Settlement** hyperlink on the pop up of the particular loan account. The system displays the **Loan Settlement – detail** screen with the details of that loan account.

OR

3. Navigate through the menus **Loans > Conventional Loans > Loan Settlement**, to view Loan Settlement.

### Loan Settlement

Loan Settlement		23-08-2010 03:26:39 GMT -1000	
Account Description	Currency	Sanctioned Loan Amount	USD Equivalent
<b>010000263-SHANE GOULD</b>			
<a href="#">CHOJSHS073340003- AMMOTISED PENALTY -CHO-BANK FUTURA - HEAD OFFICE</a>	USD	100,000.00	100,000.00
<a href="#">CHOJSHS073340006- AMMOTISED PENALTY -CHO-BANK FUTURA - HEAD OFFICE</a>	USD	100,000.00	100,000.00
<a href="#">CHOJSHS073340007- AMMOTISED PENALTY -CHO-BANK FUTURA - HEAD OFFICE</a>	USD	100,000.00	100,000.00
<a href="#">CHOLRT2073340001- Vehicle/Personal Loans-CHO-BANK FUTURA - HEAD OFFICE</a>	USD	200,000.00	200,000.00
<a href="#">CHOLRT2073340003- Vehicle/Personal Loans-CHO-BANK FUTURA - HEAD OFFICE</a>	USD	100,000.00	100,000.00
<a href="#">CHOLSA073340002- LINKING SAV AUTO DSBR AMORTIZED-CHO-BANK FUTURA - HEAD OFFICE</a>	USD	100,000.00	100,000.00
<a href="#">CHOMLAA073340001- MORTGAGE LAON AUTO DSBR AMORTISED-CHO-BANK FUTURA - HEAD OFFICE</a>	USD	10,000.00	10,000.00
<a href="#">CHOMLAA073340009- MORTGAGE LAON AUTO DSBR AMORTISED-CHO-BANK FUTURA - HEAD OFFICE</a>	USD	10,000.00	10,000.00
<a href="#">CHOMLAA073340010- MORTGAGE LAON AUTO DSBR AMORTISED-CHO-BANK FUTURA - HEAD OFFICE</a>	USD	10,000.00	10,000.00
<a href="#">CHOMLAA073340013- MORTGAGE LAON AUTO DSBR AMORTISED-CHO-BANK FUTURA - HEAD OFFICE</a>	USD	10,000.00	10,000.00
<a href="#">CHOMLFI073340006- MORTGAGE FOR INTERMEDIARY-CHO-BANK FUTURA - HEAD OFFICE</a>	USD	100,000.00	100,000.00
<a href="#">CHOMOHS073340007- MORTGAGE HOLIDAY PERIOD-CHO-BANK FUTURA - HEAD OFFICE</a>	GBP	80,000.00	117,310.40
<a href="#">CHOMOHS073340009- MORTGAGE HOLIDAY PERIOD-CHO-BANK FUTURA - HEAD OFFICE</a>	USD	100,000.00	100,000.00
<a href="#">CHOMOH6073340001- MORTGAGE HOLIDAY PERIOD MOVE FORWAR-CHO-BANK FUTURA - HEAD OFFICE</a>	USD	70,000.00	70,000.00
<a href="#">COLCLP2073510007- Vehicle/Personal Loans-COL-BANK OF USA</a>	GBP	150,000.00	219,957.00
<a href="#">COLCLP2073510008- Vehicle/Personal Loans-COL-BANK OF USA</a>	GBP	150,000.00	219,957.00
<a href="#">COLCLP2073510009- Vehicle/Personal Loans-COL-BANK OF USA</a>	GBP	150,000.00	219,957.00
<a href="#">COLCLP2080170014- Vehicle/Personal Loans-COL-BANK OF USA</a>	GBP	150,000.00	219,957.00
<a href="#">MGRMLAA080250036- MORTGAGE LAON AUTO DSBR AMORTISED-MGR-MORGAGE GROUP AND NOTARY CONFIRMATI</a>	GBP	10,000.00	14,663.80
<a href="#">MGRMLAA080250039- MORTGAGE LAON AUTO DSBR AMORTISED-MGR-MORGAGE GROUP AND NOTARY CONFIRMATI</a>	USD	10,000.00	10,000.00
<a href="#">MGRMLAA080250040- MORTGAGE LAON AUTO DSBR AMORTISED-MGR-MORGAGE GROUP AND NOTARY CONFIRMATI</a>	USD	10,000.00	10,000.00
		<b>Total for Loan Account (USD Equivalent)</b>	2,041,802.20
		<b>Grand Total for All Loan Accounts (USD Equivalent)</b>	2,041,802.20

### Field Description

Column Name	Description
<b>Account Number</b>	[Display] This column displays the account number of the loan.
<b>Currency</b>	[Display] This column displays the currency of the Loan.
<b>Sanctioned Loan Amount</b>	[Display] This column displays the total sanctioned Loan amount.
<b>Base Currency Equivalent</b>	[Display] This column displays the total sanctioned Loan amount in base currency.

4. Click on the appropriate link under the **Account Number** column. The system displays the **Loan settlement details** screen

Loan Settlement - Details

Loan Settlement		18-03-2011 14:09:54 GMT +0530
<b>Account Details</b>		
Customer Id: E01100091	Loan Tenure: 12 Months 0 Days	
Account Number: E01LRT1073320004	Product Name: Home Loans -With Pre-EMI	
Currency: GBP		
<b>Loan Details</b>		
Opening Date: 29-09-2007	Maturity Date: 29-09-2008	
Sanctioned Loan Amount: 120,000.00	Disbursed Loan Amount: 0.00	
Interest Rate: 10.00 %	Principal Penalty Rate: 12.00 %	
Amount Paid Till Date: 0.00	Prepayment Penalty Interest Rate: 4.00%	
Installment Paid: 0	Total Amount to be Repaid: 0.00	
Principal Repayment Frequency: Monthly	Interest Repayment Frequency: Monthly	
<b>Outstanding Loan Details</b>		
Principal Balance: 0.00	Prepayment Penalty Amount: 0.00	
Penalties: 0.00	Fees And Charges: 0.00	
Next Installment Date:	Next Installment Amount: 0.00	
Installment Arrears: 0.00	Loan Outstanding: 0.00	
Remaining Installments: 0	Interest Amount Still to be paid: 0.00	
<b>Transfer Details</b>		
Source Account:*	<input type="text" value="Select"/>	
Transfer Amount:*	<input type="text"/>	GBP
* Indicates mandatory field.		
		<input type="button" value="Back"/> <input type="button" value="Submit"/>

Field Description

Field Name	Description
<b>Account Details</b>	
<b>Customer Id</b>	[Display] This field displays the customer ID of the customer.
<b>Loan Tenure</b>	[Display] This field displays the total tenure of the loan.
<b>Account Number</b>	[Display] This field displays the loan account number.
<b>Product Name</b>	[Display] This field displays the loan product name.
<b>Currency</b>	[Display] This field displays the currency of the outstanding loan amount.
<b>Loan Details</b>	
<b>Opening Date</b>	[Display] This field displays the Opening date of the loan account.

<b>Field Name</b>	<b>Description</b>
<b>Maturity Date</b>	[Display] This field displays the maturity date of the loan account.
<b>Sanctioned Loan Amount</b>	[Display] This field displays the Sanctioned Loan Amount for the loan account.
<b>Disbursed Loan Amount</b>	[Display] This field displays the disbursed Loan amount for the loan account.
<b>Interest rate</b>	[Display] This field displays the interest rate for the Loan.
<b>Principle penalty Rate</b>	[Display] This field displays the penalty rate for the principal amount.
<b>Amount Paid till date</b>	[Display] This field displays the Loan amount that has been paid till date for the loan account.
<b>Prepayment penalty interest rate</b>	[Display] This field displays the prepayment penalty interest rate for the loan account.
<b>Installment Paid</b>	[Display] This field displays the total number of installments paid till date..
<b>Total Amount to be Repaid</b>	[Display] This field displays the final settlement amount.
<b>Principal Repayment Frequency</b>	[Display] This field displays the payment frequency of the principal.
<b>Interest Repayment Frequency</b>	[Display] This field displays the payment frequency of the interest.
<b>Outstanding Loan details</b>	
<b>Principal Balance</b>	[Display] This field displays the outstanding Principle balance on the loan account.
<b>Prepayment Penalty amount</b>	[Display] This field displays the prepayment penalty amount applicable if the loan amount is paid in advance or before maturity.
<b>Penalties</b>	[Display] This field displays the penalties that have been paid till date.



Field Name	Description
<b>Fees And Charges</b>	[Display] This field displays the fees and service charges applied on the loan account.
<b>Next Installment Date</b>	[Display] This field displays the due date of the next installment.
<b>Next Installment Amount</b>	[Display] This field displays the next installment amount.
<b>Installment Arrears</b>	[Display] This field displays the unpaid installment amount.
<b>Loan Outstanding</b>	[Display] This field displays the cumulated principal outstanding, penalty interest, fees/service charges and installment amount.
<b>Remaining installments</b>	[Display] This field displays the total number of remaining installments.
<b>Interest amount still to be paid</b>	[Display] This field displays the total interest applicable to the loan account.
<b>Transfer Details</b>	
<b>Source Account</b>	[Mandatory, Drop-Down] Select the appropriate account from the drop-down list. The account should have the necessary funds for debit and transfer to the loan account.
<b>Transfer Amount</b>	[Mandatory, Numeric, 15] Type the amount that is to be transferred from the source account to the loan account..


- Click the **Submit** button. The system displays the **Loan Settlement - Verify** screen.  
OR  
Click the **Back** button to return to the previous screen.

Loan Settlement - Verify

Loan Settlement-Verify		31-03-2011 13:00:00 GMT +0530
<b>Account Details</b>		
Customer Id: QT2001774	Loan Tenure: 4 Months	
Account Number: QT1LCL1102830020	Product Name: QT1	
Currency: GBP		
<b>Transaction Details</b>		
Source Account: QT100177909		
Destination Account: QT1LCL1102830020		
Transfer Amount: 10,000.00		
Currency: GBP		
		<input type="button" value="Change"/> <input type="button" value="Confirm"/>

- Click the **Confirm** button. The system displays the **Loan Settlement - Confirm** screen.  
OR  
Click the **Change** button to change any of the parameters of payment.

Loan Settlement - Confirm

	Loan Amount Transferred Successfully Transaction submitted for Loan Settlement having reference 249080202329071 has been Auto Authorized .	
<b>Loan Settlement-Confirm</b>		31-03-2011 13:00:00 GMT +0530
Host Reference Number: QT1ZSTL11090001N		
<b>Account Details</b>		
Customer Id: QT2001774	Loan Tenure: 4 Months	
Account Number: QT1LCL1102830020	Product Name: QT1	
Currency: GBP		
<b>Transaction Details</b>		
Source Account: QT100177909		
Destination Account: QT1LCL1102830020		
Transfer Amount: 10,000.00		
Currency: GBP		
		<input type="button" value="Settle Another Loan"/>

- Click the **Settle Another Loan** button. The system returns you to the **Loan Summary** screen.

## 7. Loan Account Activity

This option allows you to view all the activity that has occurred in your account for a given period. The option allows you to select a transaction type (debit, credit or both), a date range, and a sorting order. It allows you to view the outstanding balance in your loan account.

The statement displays the transaction date, the value date and the amount of debit or credit depending on what you have selected. It also gives you an option of downloading the statement in Microsoft Excel format.

This option should ideally be used when you want to check the activity in your loan account over a period of time. It is a useful method of tracking any discrepancies or reconciling it with other budgetary activities.

### To view the loan account activity

1. Navigate through the menus to **Loan Details**. The system displays the **Loan Account Details** screen.

Loan Account Details

Loan Account Details		23-08-2010 03:47:46 GMT -1000	
Account Description	Currency	Sanctioned Loan USD Amount Equivalent	
<b>010000263-SHANE GOULD</b>			
CHOJSHS073340003-CHO-BANK FUTURA - HEAD OFFICE	USD	100,000.00	100,000.00
CHOJSHS073340003-CHO-BANK FUTURA - HEAD OFFICE	USD	100,000.00	100,000.00
CHOJSHS073340003-CHO-BANK FUTURA - HEAD OFFICE	USD	100,000.00	100,000.00
CHOJSHS073340003-CHO-BANK FUTURA - HEAD OFFICE	USD	200,000.00	200,000.00
CHOJSHS073340003-CHO-BANK FUTURA - HEAD OFFICE	USD	100,000.00	100,000.00
SBR AMORTIZED-CHO-BANK FUTURA - HEAD OFFICE	USD	100,000.00	100,000.00
TO DSBR AMORTISED-CHO-BANK FUTURA - HEAD OFFICE	USD	10,000.00	10,000.00
TO DSBR AMORTISED-CHO-BANK FUTURA - HEAD OFFICE	USD	10,000.00	10,000.00
TO DSBR AMORTISED-CHO-BANK FUTURA - HEAD OFFICE	USD	10,000.00	10,000.00
TO DSBR AMORTISED-CHO-BANK FUTURA - HEAD OFFICE	USD	10,000.00	10,000.00
MEDIARY-CHO-BANK FUTURA - HEAD OFFICE	USD	100,000.00	100,000.00
CHOMOH5073340007-MORTGAGE HOLIDAY PERIOD-CHO-BANK FUTURA - HEAD OFFICE	GBP	80,000.00	117,310.40
CHOMOH5073340009-MORTGAGE HOLIDAY PERIOD-CHO-BANK FUTURA - HEAD OFFICE	USD	100,000.00	100,000.00
CHOMOH6073340001-MORTGAGE HOLIDAY PERIOD MOVE FORWARD-CHO-BANK FUTURA - HEAD OFFICE	USD	70,000.00	70,000.00
COLCLP2073510007-Vehicle/Personal Loans-COL-BANK OF USA	GBP	150,000.00	219,957.00
COLCLP2073510008-Vehicle/Personal Loans-COL-BANK OF USA	GBP	150,000.00	219,957.00
COLCLP2073510009-Vehicle/Personal Loans-COL-BANK OF USA	GBP	150,000.00	219,957.00
COLCLP2080170014-Vehicle/Personal Loans-COL-BANK OF USA	GBP	150,000.00	219,957.00
MGRMLAA080250036-MORTGAGE LAON AUTO DSBR AMORTISED-MGR-MORGAGE GROUP AND NOTARY CONFIRMATI	GBP	10,000.00	14,663.80
MGRMLAA080250039-MORTGAGE LAON AUTO DSBR AMORTISED-MGR-MORGAGE GROUP AND NOTARY CONFIRMATI	USD	10,000.00	10,000.00
MGRMLAA080250040-MORTGAGE LAON AUTO DSBR AMORTISED-MGR-MORGAGE GROUP AND NOTARY CONFIRMATI	USD	10,000.00	10,000.00
<b>Total for Loan Account (USD Equivalent)</b>		<b>2,041,802.20</b>	<b>2,041,802.20</b>
<b>Grand Total for All Loan Accounts (USD Equivalent)</b>		<b>2,041,802.20</b>	<b>2,041,802.20</b>

2. Click the **Loan Account Activity** hyperlink on the pop up. The system displays the **Loan Account Activity** screen.

OR

3. Navigate through the menus **Loans > Conventional Loans > Loan Account Activity** to view Loan Account Activity.

Loan Activity

Loan Activity		31-03-2011 13:00:00 GMT +0530	
Select Account **:	<input type="text" value="Select"/>	Transaction Type*:	<input type="text" value="Both Debit and Credit Transactions"/>
Search By*:	<input type="text" value="Current Period"/>		
From Date**:	<input type="text" value=""/>	To Date**:	<input type="text" value=""/>
Sort By*:	<input type="text" value="Value Date"/>	Sort Order*:	<input type="text" value="Descending"/>
<small>*Dates specified are the value dates.                      **Indicates mandatory field.                      ***Indicates mandatory if particular option is enabled.</small>			
			<input type="button" value="Submit"/>

Field Description

Field Name	Description
Select Account	[Mandatory, Drop-Down] Select the loan account for which you will view the activity/ statement from the drop-down list.

Field Name	Description
<b>Transaction Type</b>	<p>[Mandatory, Drop-Down]</p> <p>Select the type of transaction from the dropdown list.</p> <p>The options are as follows:</p> <ul style="list-style-type: none"> <li>• Both Debits and Credits</li> <li>• Only Debits</li> <li>• Only Credits</li> </ul>
<b>Search By</b>	<p>[Mandatory, Drop-Down]</p> <p>Select the search period from the dropdown list.</p> <p>The options are as follows:</p> <ul style="list-style-type: none"> <li>• Current Period</li> <li>• Previous Period</li> <li>• Last n Transactions</li> <li>• Last n days</li> <li>• Today's Transactions</li> <li>• Yesterdays transactions</li> <li>• Previous week</li> <li>• Previous fortnight</li> <li>• Previous month</li> <li>• Previous Quarter</li> <li>• Last 6 months</li> <li>• Specified Period:</li> </ul>
<b>No of days/ Transactions</b>	<p>[Conditional, Numeric, 15]</p> <p>Type the number of days/ transaction depending upon the type of selection for days or transaction</p> <p>This field is enabled if you have selected no of days/transactions in the search by field.</p>
<b>From Date</b>	<p>[Conditional, Pick List]</p> <p>Select the start date of the period.</p> <p>This field is enabled if the <b>Specified Period</b> is selected from the <b>Search By</b> drop-down list.</p>
<b>To Date</b>	<p>[Conditional, Pick List]</p> <p>Select the end date of the period.</p> <p>This field is enabled if the <b>Specified Period</b> is selected from the <b>Search By</b> drop-down list.</p>

Field Name	Description
<b>Sort By</b>	[Mandatory, Drop-Down] Select the type of sorting from this drop-down list. The options are as follows: <ul style="list-style-type: none"> <li>• Transaction Date</li> <li>• Amount</li> <li>• Value Date</li> </ul>
<b>Sort Order</b>	[Mandatory, Drop-Down] Select the sort order from the drop-down list. The options are as follows: <ul style="list-style-type: none"> <li>• Ascending</li> <li>• Descending</li> </ul>

4. Select the search criteria from the drop-down list.
5. Click the **Submit** button. The system displays the **Loan Activity** screen with the search results.

### Loan Activity

31-03-2011 13:00:00 GMT +0530

---

Select Account: \*

Search By\*:

From Date\*\*\*:

Sort By\*:

Transaction Type\*:

No of Transactions:

To Date\*\*\*:

Sort Order\*:

\*Dates specified are the value dates.  
 \*:Indicates mandatory field.  
 \*\*:Indicates mandatory if particular option is enabled.

---

Account Number	Account Currency
QT1LCL1102830006	GBP

Pages : (2)    1    2

Transaction Date	Value Date	Transaction Reference No.	Description	Debit	Credit
31-03-2011	31-03-2011	QT1ZTRF1109003UL			1.87
31-03-2011	31-03-2011	QT1ZTRF1109003UN			0.13
03-03-2011	03-03-2011	QT1ZTRF11062038W			2.93
03-03-2011	03-03-2011	QT1ZTRF11062038Y			0.07
15-02-2011	15-02-2011	QT1ZTRF11046028Z			26.78

### Field Description

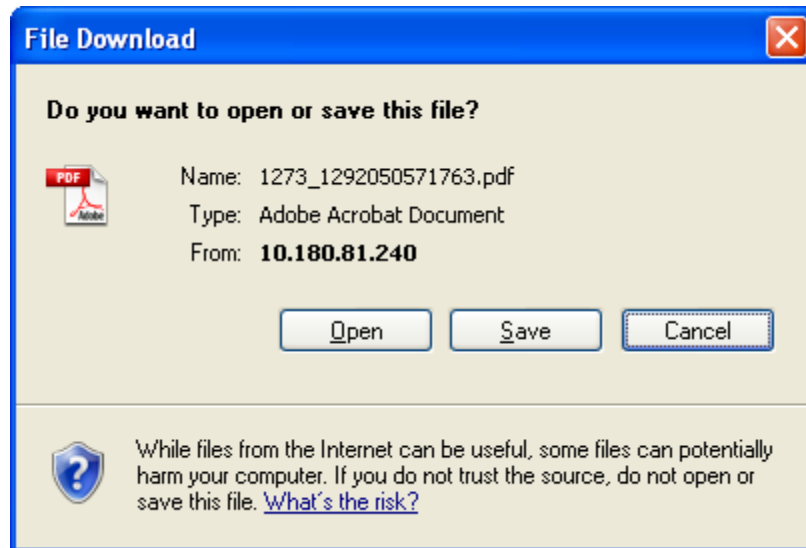
Field Name	Description
<b>Account Number</b>	[Display] This field displays the loan account number for which you have generated the statement.
<b>Account Currency</b>	[Display] This field displays the default currency in which the account transactions are conducted.

Column Name	Description
<b>Transaction Date</b>	[Display] This column displays the date on which the transaction has taken place.
<b>Value Date</b>	[Display] This column displays the date on which the transaction has actually been credited or debited into the account. This date could be different from the transaction date.
<b>Transaction Reference Number</b>	[Display] This column displays Transaction Reference Number for the said transaction.
<b>Description</b>	[Display] This column displays description about the transaction.
<b>Debit</b>	[Display] This column displays the amount of debit.
<b>Credit</b>	[Display] This column displays the amount of credit.

Field Name	Description
<b>Select Download Format</b>	[Optional, Drop-Down] Select the appropriate format in which you want to download the activity statement from the drop-down list. The options are: <ul style="list-style-type: none"> <li>• Excel Format</li> <li>• PDF Format</li> </ul>

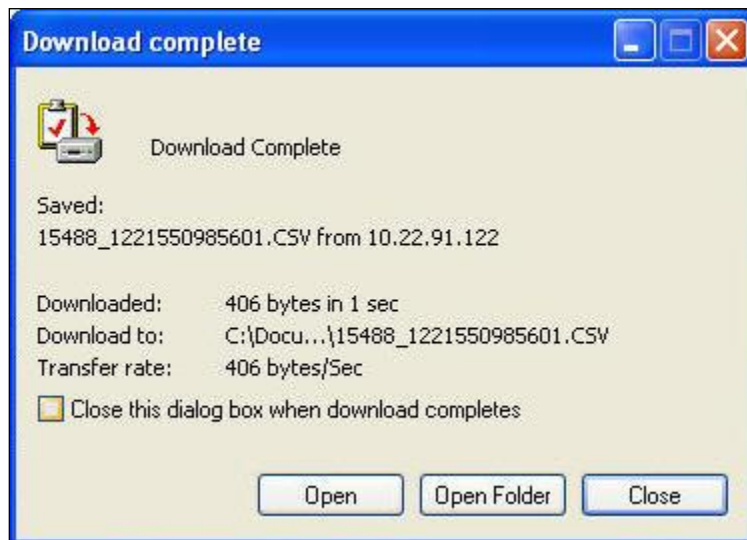
6. Select the format from the **Select Download Format** drop-down list.
7. Click the **Download** button. The system displays the **File Download** dialog box.

**File Download**



8. Click the **Open** button to open the file.  
OR  
Click the **Save** to download and save. The system will save the file at the specified location.
9. Specify the name for the file and the location and click on the **Save** button. Once the download is complete, the system displays the **Download complete** message box.

### Download Complete



10. Click the **Open** button to open the file or click the **Close** button to view the file later.  
OR  
Click the **Open Folder** button to open the folder in which the file is saved  
OR  
Click the **Close** button to close the Download dialog box.



## 8. Loans Interest Rates

This option allows you to view the different interest rates of loan.

To view Loan interest rates:

1. Navigate through the menus to **Tools > Loan Interest Rates**.

### Loan Rate Inquiry

#### Loan Rate Inquiry

31-03-2011 13:00:00 GMT +0530



Discounted Loans			
Product Name	Interest Rate	Interest Rate Type	Effective Date
MAIN_INT	12.00%	FIXED	28-11-2005

Discounted Loans			
Product Name	Interest Rate	Interest Rate Type	Effective Date
PENALTY ON PRINCIPAL OVDU	12.00%	FIXED	28-11-2005

Home Loans -With Pre-EMI			
Product Name	Interest Rate	Interest Rate Type	Effective Date
PENALTY ON INTEREST OVDU	12.00%	FIXED	01-10-2010

Home Loans -With Pre-EMI			
Product Name	Interest Rate	Interest Rate Type	Effective Date
PENALTY ON PRINCIPAL OVDU	10.00%	FIXED	01-10-2010

Vehicle/Personal Loans			
Product Name	Interest Rate	Interest Rate Type	Effective Date
MAIN_INT	10.00%	FIXED	28-11-2005

### Field Description

<b>Field Name</b>	<b>Description</b>
<b>Product Name</b>	[Display] This field displays the name of the product.
<b>Interest rate</b>	[Display] This field displays the Rate of interest for the product.
<b>Interest rate type</b>	[Display] This field displays the type of the interest rate for the product.
<b>Effective date</b>	[Display] This field displays the effective date for the interest rate to be applicable.

2. Click the >> button to go to the next page of Loan Rate Inquiry.  
OR  
Click the << button to go the previous page of Loan Rate inquiry.

## 9. Loan Calculator

This option allows you to inquire the installment amount, on the basis of Rate of interest and the installment amount you are willing to pay for the loan amount and the period for which you want the loan.

This option allows you to estimate the total interest payable and monthly instalment on specifying total loan amount, interest rate and period of loan.

A loan amortization schedule can also be generated on the basis of the details provided by you. A loan amortization schedule displays the interest and principal component and the due date of each installment.

### **To view Loan Calculator:**

1. Navigate through the menus to **Tools > Loan Calculator**.

Loan calculator

31-03-2011 13:00:00 GMT +0530

---

Please enter the following

Principal Amount	<input type="text" value="1000000"/>	GBP	
Interest Rate	<input type="text" value="15"/>		<input type="range" value="15"/>
Loan Disbursement Date	<input type="text" value="01-04-2011"/>		<input type="button" value="Calendar"/>
First Due Date	<input type="text" value="01-05-2011"/>		<input type="button" value="Calendar"/>
No Of Installments	<input type="text" value="10"/>		<input type="range" value="10"/>

Calculate

Field Description

Field Name	Description
<b>Principal Amount</b>	[Mandatory, Numeric,18,2] Type the principal amount to be taken as loan.
<b>Interest rate</b>	[Mandatory, Numeric,13,2] Type the interest rate at which the amount will be calculated.
<b>Loan Disbursement Date</b>	[Mandatory, Pick list] Select the date on which the loan disbursement is to be done.
<b>First due date</b>	[Mandatory, Pick list] Select the first due date of the loan.
<b>No of installments</b>	[Mandatory, Numeric] Type the number of installments for the loan.

2. Click the **Calculate** button. The system displays the **Loan calculator** with projected details screen.

Loan Calculator

Loan Calculator

31-03-2011 13:00:00 GMT +0530

**Please enter the following**

Principal Amount	<input type="text" value="1000000"/>	GBP
Interest Rate	<input type="text" value="15"/>	<input type="range"/>
Loan Disbursement Date	<input type="text" value="01-04-2011"/>	<input type="button" value="Calendar"/>
First Due Date	<input type="text" value="01-05-2011"/>	<input type="button" value="Calendar"/>
No Of Installments	<input type="text" value="10"/>	<input type="range"/>

**Calculate**

**Projected Details**

Total Interest	70,285.60
Total Payment	1,000,000.00
Monthly Installment	107,028.56
Last Payment Date	01-02-2012



Records 1 to 10 of 10 |<< << Page 1 of 1 >> >>|





Date	Payment	Interest	Principal	Principal Balance	Balance
01-05-2011	GBP 107,028.56	GBP 12,328.77	GBP 94,699.79	GBP 905,300.21	GBP 892,971.44
01-06-2011	GBP 107,028.56	GBP 11,533.28	GBP 95,495.28	GBP 809,804.93	GBP 785,942.88
01-07-2011	GBP 107,028.56	GBP 9,983.90	GBP 97,044.66	GBP 712,760.27	GBP 678,914.32
01-08-2011	GBP 107,028.56	GBP 9,080.37	GBP 97,948.19	GBP 614,812.08	GBP 571,885.76
01-09-2011	GBP 107,028.56	GBP 7,832.54	GBP 99,196.02	GBP 515,616.06	GBP 464,857.20
01-10-2011	GBP 107,028.56	GBP 6,356.91	GBP 100,671.65	GBP 414,944.41	GBP 357,828.64
01-11-2011	GBP 107,028.56	GBP 5,286.28	GBP 101,742.28	GBP 313,202.13	GBP 250,800.08
01-12-2011	GBP 107,028.56	GBP 3,861.40	GBP 103,167.16	GBP 210,034.97	GBP 143,771.52
01-01-2012	GBP 107,028.56	GBP 2,675.79	GBP 104,352.77	GBP 105,682.20	GBP 36,742.96
01-02-2012	GBP 107,028.56	GBP 1,346.36	GBP 105,682.20	GBP 0.00	GBP -70,285.60

This information is provided for illustration purposes only. It does not constitute a quote. The figures are estimates and do not account for amounts being rounded off.

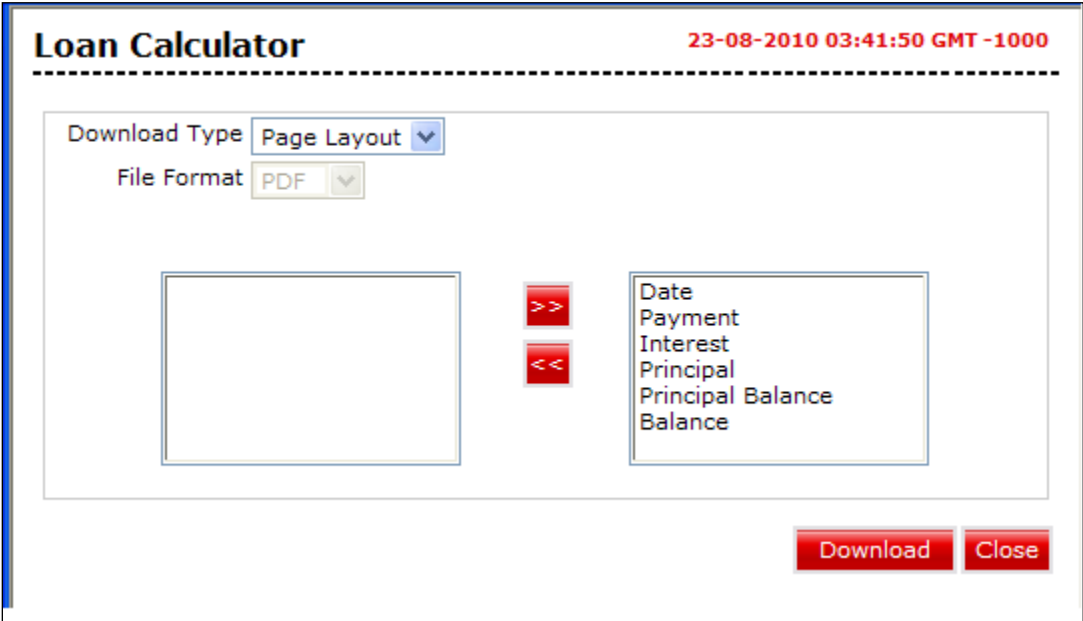
Column Description

Column Name	Description
<b>Date</b>	[Display] This column displays the date of first installment.
<b>Payment</b>	[Display] This column displays the installment amount and the currency.
<b>Interest</b>	[Display] This column displays the amount of interest paid in the installment and the currency.
<b>Principal</b>	[Display] This column displays the amount of principal paid in the installment and the currency.

- Principal Balance** [Display]  
This column displays the amount of principal balance and the currency.
- Balance** [Display]  
This column displays the amount of total balance and the currency.

- 3. Click the **Download**  button to download the complete statement. The system displays the **Outward Guarantee Amendment** screen.  
OR  
Click the **Reorder**  button to reorder the columns or select the columns that appear in the list.  
OR  
Click the **Print**  button to print the data.  
OR  
Click the **Edit**  button to edit the number of columns.

**Loan Calculator – Download**





**Field Description**

Field Name	Description
------------	-------------

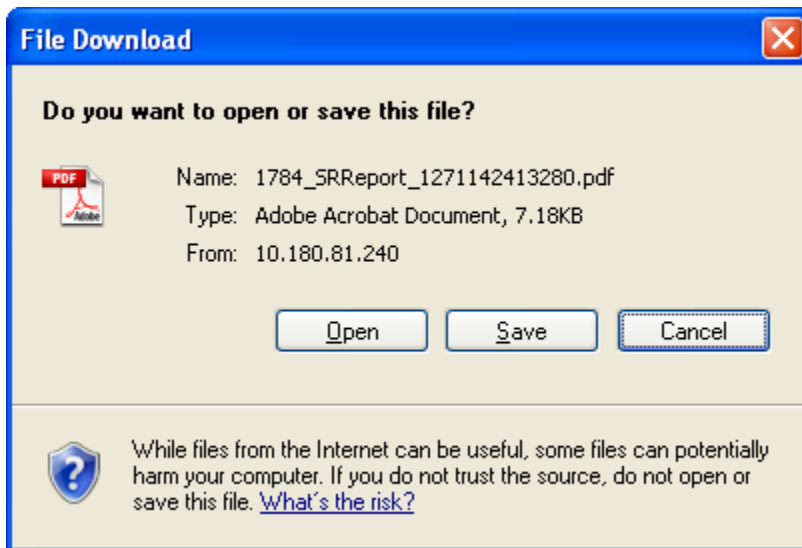
Field Name	Description
<b>Download Type</b>	[Mandatory, Drop-Down] Select the appropriate report type from the drop-down list. The options available are: <ul style="list-style-type: none"> <li>• Page Layout</li> </ul>
<b>File Format</b>	[Conditional, Drop-Down] Select the appropriate type of file format from the drop-down list. The options available are <ul style="list-style-type: none"> <li>• PDF</li> <li>• XLS</li> <li>• HTML</li> <li>• RTF</li> </ul>

4. Select the download type and file format from the drop-down list.

5. Click the  button to exclude the options for downloading.

6. Click the  button to include the options for downloading.

**File Download**

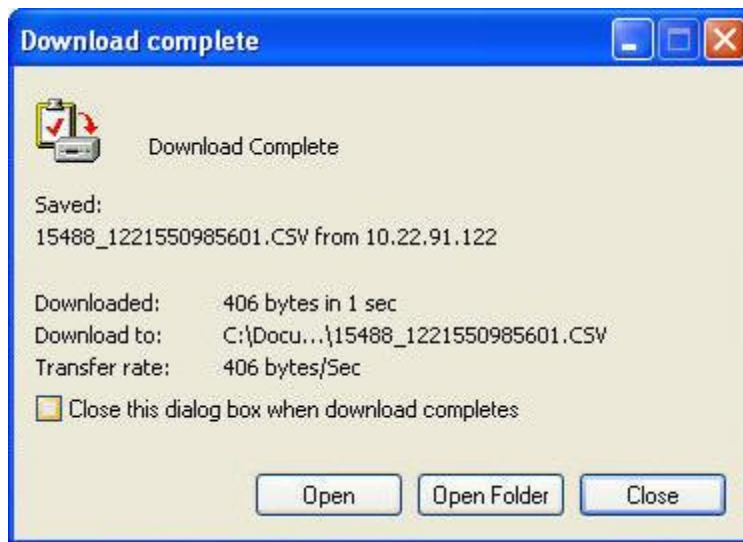


7. Click the **Open** button to open the file.

OR

Click the **Save** to download and save. The system will save the file at the specified location.

## Download Complete



8. Click the **Open** button to open the file.  
OR  
Click the **Open Folder** button to open the folder in which the file is saved  
OR  
Click the **Close** button to close the download transaction.



## 10. Mortgage Calculator

This option allows you to inquire the installment amount for the mortgage, on the basis of Rate of interest you are willing to pay for the loan amount and the period for which you want the mortgage loan.

You can get an indicative estimate of the total interest payable and monthly instalment for a mortgage of specific amount, interest rate and period.

A repayment schedule shall also be generated on the basis of the details provided by you and a repayment schedule shall display the interest and principal component and the due date of each installment.

### To User Mortgage Calculator:

1. Navigate through the menus to **Tools > Mortgage Rate Calculator**.

### Mortgage Calculator

**Mortgage Rate Calculator**
23-08-2010 03:43:22 GMT -1000

---

Please enter the following

Loan Amount	<input style="width: 100%;" type="text"/>
Term in Years	Select <span style="font-size: small;">▼</span>
Rate of Interest	Select <span style="font-size: small;">▼</span>

### Field Description

Field Name	Description
<b>Loan Amount</b>	[Mandatory, Numeric,18,2] Type the principal amount to be taken as Loan.
<b>Term in years</b>	[Mandatory, Dropdown] Select the term for which the mortgage loan is required from the dropdown list.
<b>Rate of Interest</b>	[Mandatory, Dropdown] Select the rate of interest for the mortgage loan from the dropdown list.

6. Click the **Calculate** button, the system displays the loan schedule details screen.

### Mortgage Rate Calculator

23-08-2010 03:45:28 GMT -1000

---

**Please enter the following**

Loan Amount

Term in Years

Rate of Interest

Calculate

---

**Projected Details**

Total Interest 0.00  
Total Payment 10,000.00  
Monthly Installment 833.33

Records 1 to 10 of 12 | Page 1 of 2


Month	Loan Amount	EMI	Interest	Principal	Balance Outstanding
1	GBP 9,166.67	GBP 833.33	GBP 0.00	GBP 833.33	GBP 9,166.67
2	GBP 8,333.34	GBP 833.33	GBP 0.00	GBP 833.33	GBP 8,333.34
3	GBP 7,500.01	GBP 833.33	GBP 0.00	GBP 833.33	GBP 7,500.01
4	GBP 6,666.68	GBP 833.33	GBP 0.00	GBP 833.33	GBP 6,666.68
5	GBP 5,833.35	GBP 833.33	GBP 0.00	GBP 833.33	GBP 5,833.35
6	GBP 5,000.02	GBP 833.33	GBP 0.00	GBP 833.33	GBP 5,000.02
7	GBP 4,166.69	GBP 833.33	GBP 0.00	GBP 833.33	GBP 4,166.69
8	GBP 3,333.36	GBP 833.33	GBP 0.00	GBP 833.33	GBP 3,333.36
9	GBP 2,500.03	GBP 833.33	GBP 0.00	GBP 833.33	GBP 2,500.03
10	GBP 1,666.70	GBP 833.33	GBP 0.00	GBP 833.33	GBP 1,666.70

This information is provided for illustration purposes only. It does not constitute a quote. The figures are estimates and do not account for amounts being rounded off.


### Column Description

Field Name	Description
<b>Month</b>	[Display] This column displays the month number for installment.

Field Name	Description
<b>Loan Amount</b>	[Display] This column displays the Loan amount with the currency.
<b>EMI</b>	[Display] This column displays the amount of EMI to be paid for the month and the currency.
<b>Interest</b>	[Display] This column displays the amount of interest to be paid for the month and the currency.
<b>Principal</b>	[Display] This column displays the amount of principal paid in the EMI and the currency.
<b>Balance Outstanding</b>	[Display] This column displays the amount of balance outstanding and the currency.

7. Click the **Download**  button to download the complete statement. The system displays the **Outward Guarantee Amendment** screen.


OR

Click the **Reorder**  button to reorder the columns or select the columns that appear in the list.

OR

Click the **Print**  button to print the data.

OR

Click the **Edit**  button to edit the number of column..

## Download Mortgage Rate Calculator

**Mortgage Rate Calculator** 23-08-2010 03:46:20 GMT -1000

---

Download Type Page Layout ▼

File Format PDF ▼

v  
v  
^  
^

Month

Loan Amount

EMI

Interest

Principal


Balance Outstanding

Download
Close

## Field Description

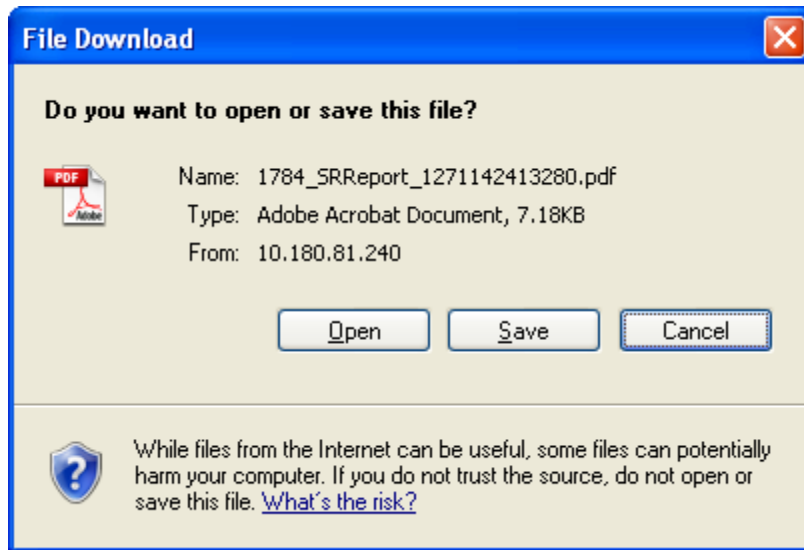
Field Name	Description
<b>Download Type</b>	<p>[Mandatory, Drop-Down]</p> <p>Select the appropriate report type from the drop-down list. The available choices are:</p> <ul style="list-style-type: none"> <li>• Page Layout</li> </ul>
<b>File Format</b>	<p>[Conditional, Drop-Down]</p> <p>Select the appropriate type of file format from the drop-down list. The options available are</p> <ul style="list-style-type: none"> <li>• PDF</li> <li>• XLS</li> <li>• HTML</li> <li>• RTF</li> </ul>

8. Select the download type and file format from the drop-down list.

9. Click the  button to exclude the options for downloading.

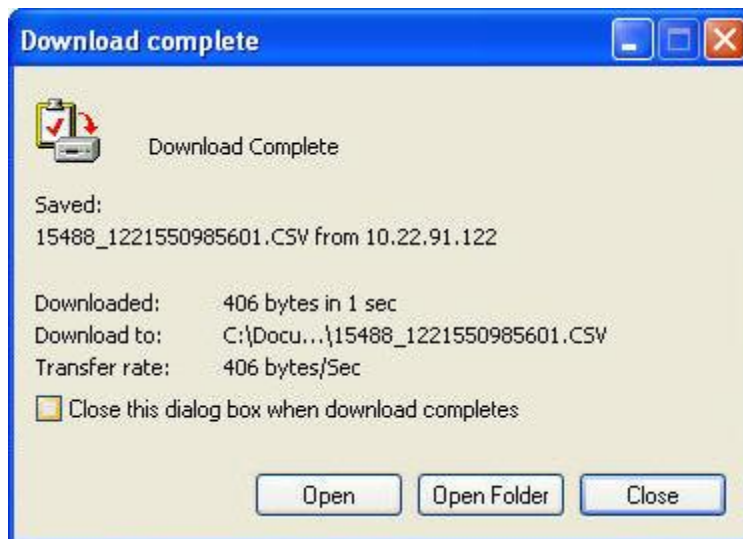
10. Click the  button to include the options for downloading.

## File Download



11. Click the **Open** button to open the file.  
OR  
Click the **Save** to download and save. The system will save the file at the specified location.

## Download Complete



12. Click the **Open** button to open the file  
OR  
Click the **Open Folder** button to open the folder in which the file is saved  
OR  
Click the **Close** button to close the Download projected details dialog box.



Oracle FLEXCUBE Direct Banking

Retail Loans User Manual

October 2012

Version Number: 12.0.1.0.0

Oracle Financial Services Software Limited

Oracle Park

Off Western Express Highway

Goregaon (East)

Mumbai, Maharashtra 400 063

India

Worldwide Inquiries:

Phone: +91 22 6718 3000

Fax:+91 22 6718 3001

[www.oracle.com/financialservices/](http://www.oracle.com/financialservices/)

Copyright © 2008, 2012, Oracle and/or its affiliates. All rights reserved.

Oracle and Java are registered trademarks of Oracle and/or its affiliates. Other names may be trademarks of their respective owners.

U.S. GOVERNMENT END USERS: Oracle programs, including any operating system, integrated software, any programs installed on the hardware, and/or documentation, delivered to U.S. Government end users are "commercial computer software" pursuant to the applicable Federal Acquisition Regulation and agency-specific supplemental regulations. As such, use, duplication, disclosure, modification, and adaptation of the programs, including any operating system, integrated software, any programs installed on the hardware, and/or documentation, shall be subject to license terms and license restrictions applicable to the programs. No other rights are granted to the U.S. Government.

This software or hardware is developed for general use in a variety of information management applications. It is not developed or intended for use in any inherently dangerous applications, including applications that may create a risk of personal injury. If you use this software or hardware in dangerous applications, then you shall be responsible to take all appropriate failsafe, backup, redundancy, and other measures to ensure its safe use. Oracle Corporation and its affiliates disclaim any liability for any damages caused by use of this software or hardware in dangerous applications.

This software and related documentation are provided under a license agreement containing restrictions on use and disclosure and are protected by intellectual property laws. Except as expressly permitted in your license agreement or allowed by law, you may not use, copy, reproduce, translate, broadcast, modify, license, transmit, distribute, exhibit, perform, publish or display any part, in any form, or by any means. Reverse engineering, disassembly, or decompilation of this software, unless required by law for interoperability, is prohibited.

The information contained herein is subject to change without notice and is not warranted to be error-free. If you find any errors, please report them to us in writing.

This software or hardware and documentation may provide access to or information on content, products and services from third parties. Oracle Corporation and its affiliates are not responsible for and expressly disclaim all warranties of any kind with respect to third-party content, products, and services. Oracle Corporation and its affiliates will not be responsible for any loss, costs, or damages incurred due to your access to or use of third-party content, products, or services.

**Hardware and Software**  
  
**Engineered to Work Together**